

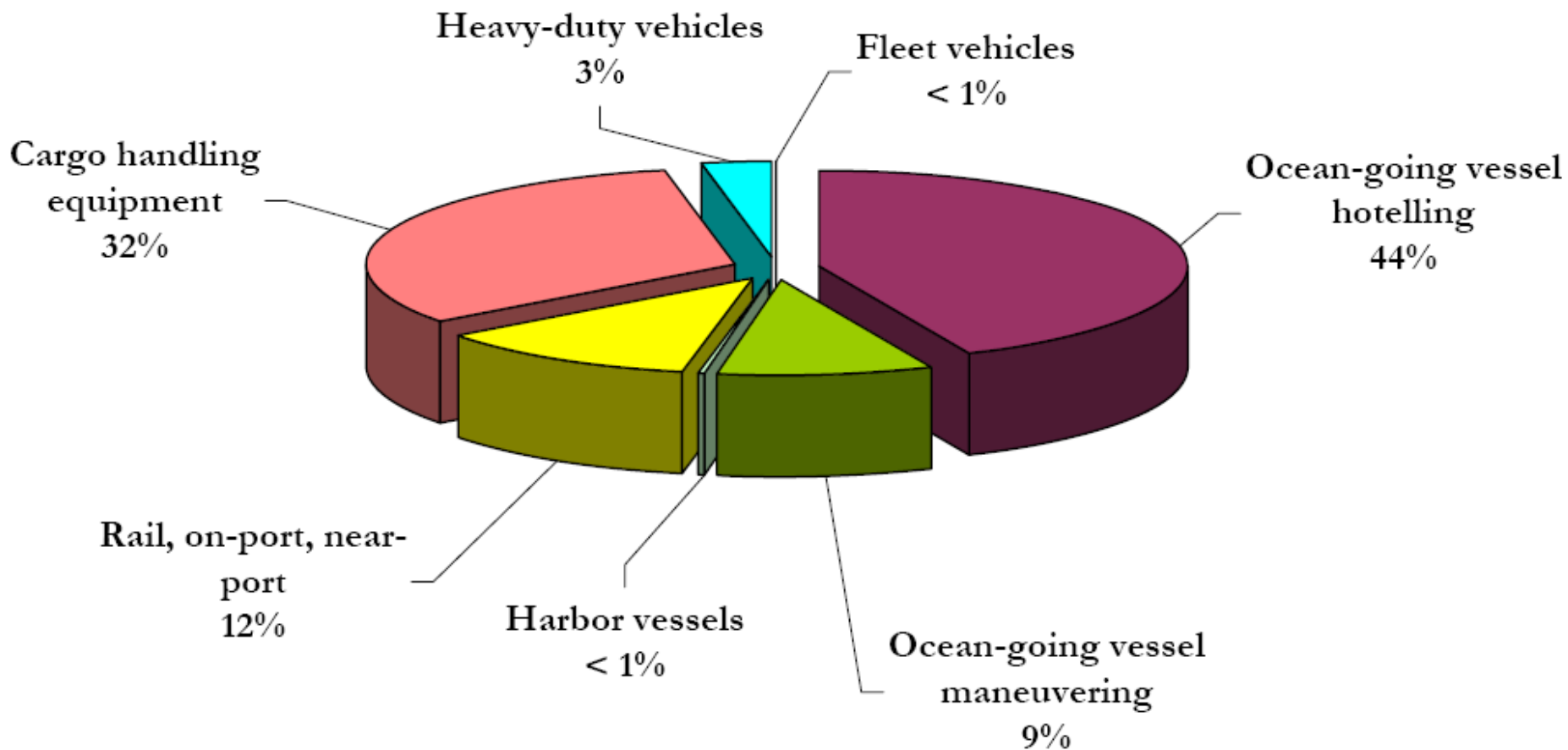
# At-Berth Clean Fuels (ABC) Vessel Incentive Program

Phil Lutes, Deputy Managing Director,  
Seaport

Ellen Watson, Environmental Management  
Specialist II, Seaport Environmental  
Programs

- Program History
- Program Overview
- 2009 Results
- 2010 1<sup>st</sup> Quarter Results
- Projected 2010 Results
- Program Highlights
- Program Budget/Costs

# Diesel Particulate Matter Port of Seattle



# Program Overview

- Incentive program in partnership with Puget Sound Clean Air Agency
- Covers ~50% of cost differential for using low sulfur fuel ( $\leq 0.5\%$  sulfur) while at berth
  - 2009 per call incentive: \$1,500
  - 2010 incentive: \$2250
- Targeted at frequent callers (> 5 port visits annually)

# Program Overview

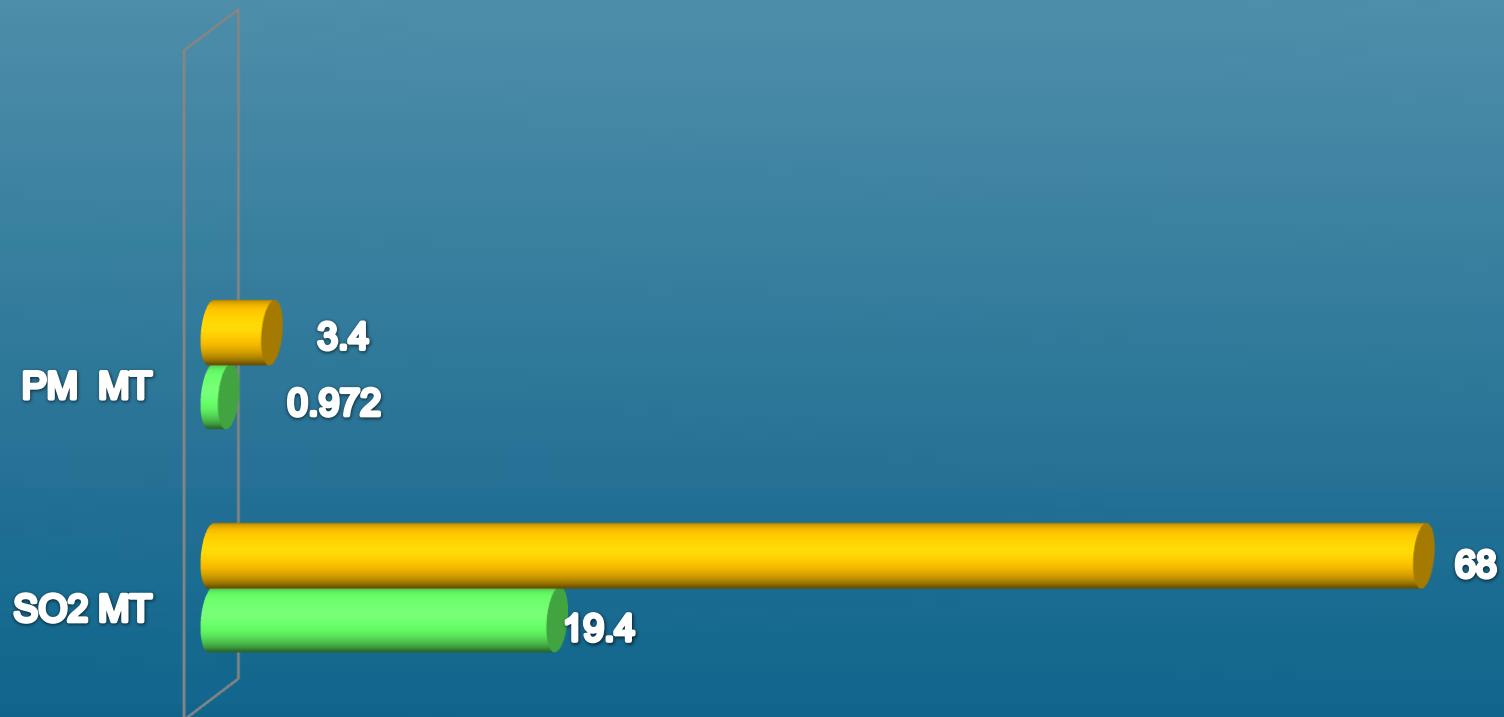
- Audit program established to verify ABC Fuels Program reporting
- Third-party audit of two vessels per carrier per year
- Audit involves review of fuel logs and bunker delivery notes as well as visual inspection of fuel tanks

# ABC Program Results 2009

- 6 container lines: APL, COSCO, Hamburg Sud, Hapag-Lloyd, Maersk, & Matson
- 2 Cruise lines: Norwegian & Princess
- 235 Qualifying Visits (33% of frequent callers)
- \$352,500 paid in incentives @ \$1500/visit
- Total sulfur reduction: ~68 Metric Tons
- Total annual cost: ~\$380,000

# 2009 Emission Reductions

■ Actual ■ Estimate

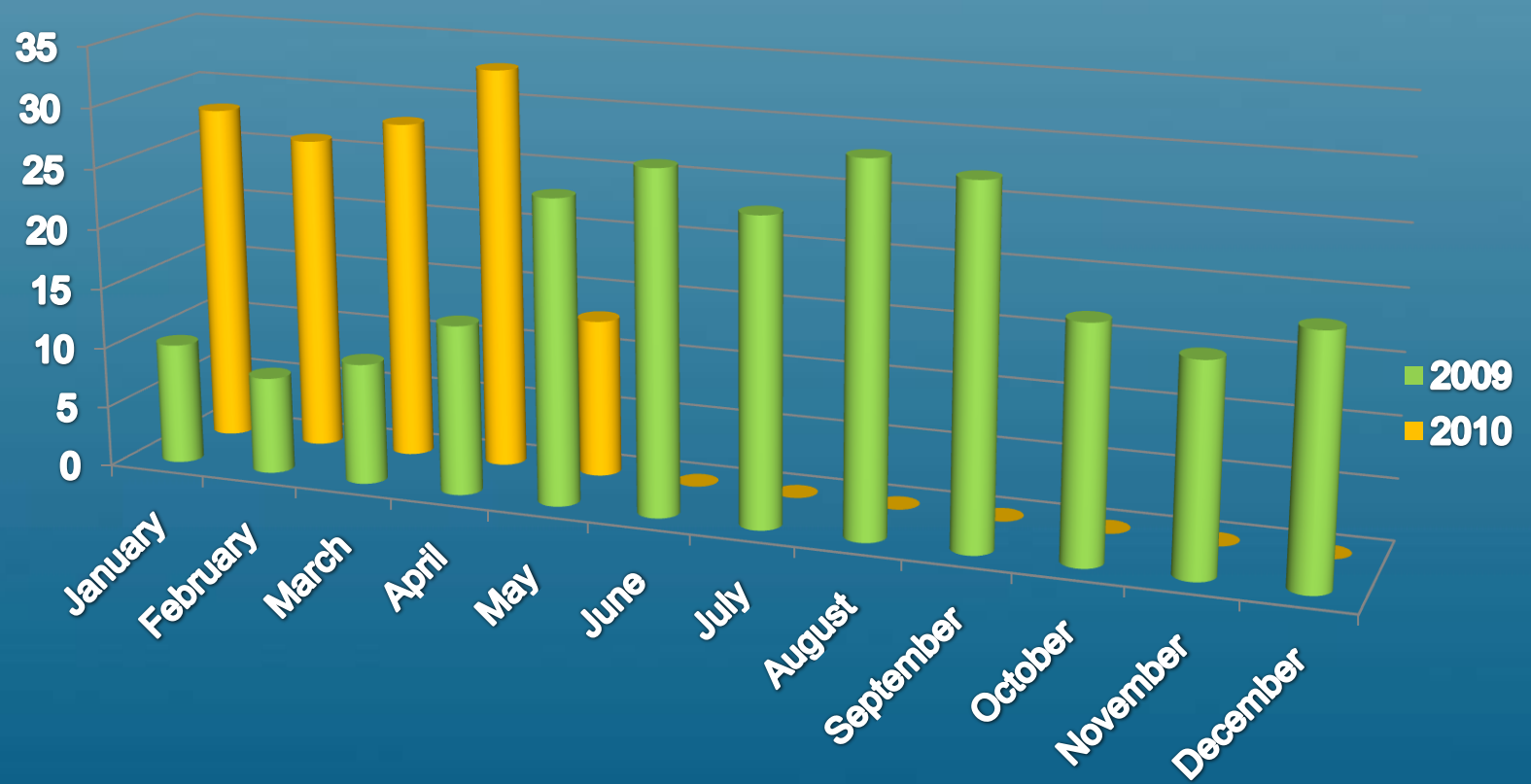


# ABC Program Results 1Q 2010

- 7 container lines
- 2 Cruise lines
- 82 Qualifying Visits
- \$184,500 payout @ \$2250/visit
- Sulfur reduction: 22 Metric Tons



# 2009 vs 2010 YTD Visits



# Projected 2010 Results

- Qualifying Vessel Visits: 350
- Metric Tons of Sulfur Reduced: 100 MT
- Participating Carriers – 8 container carriers, 2 cruise lines
- Incentives to be paid: \$787,500

# Program Budget 2010

- 2010 Budget Authorized • \$300,000
- Current Request for Authorization\* • \$541,500
- Total 2010 Authorizations • \$841,500

*\* \$135,500 of \$541,500 was approved in 2009 but not used until 2010*

# 2010 Program Expenses

- 1<sup>st</sup> Quarter Incentive Payouts • \$184,500
- Estimated Payouts Q2 – Q4 2010 • \$603,000
- Admin & Audit Costs • \$54,000